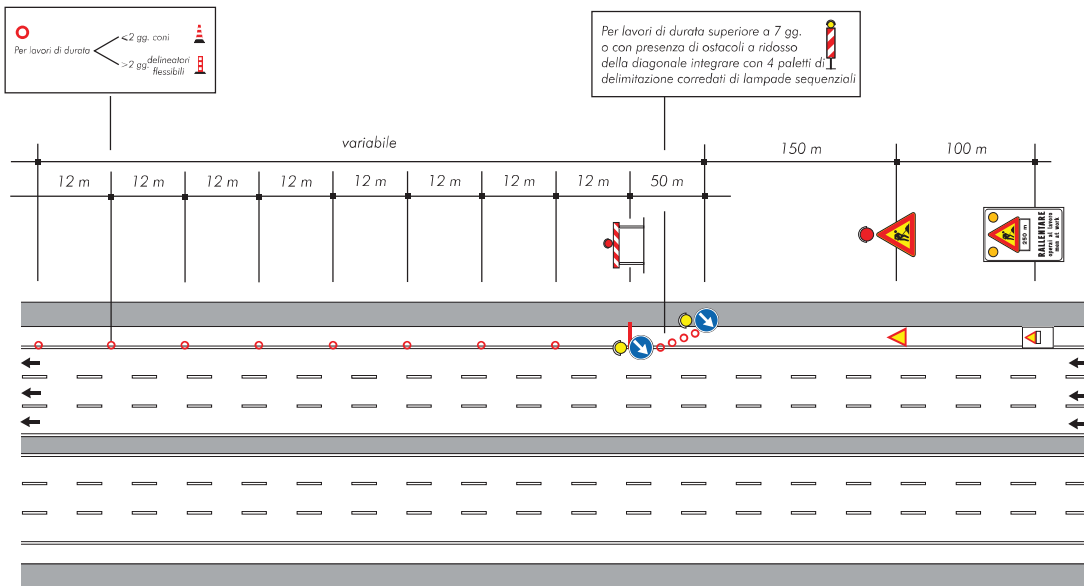
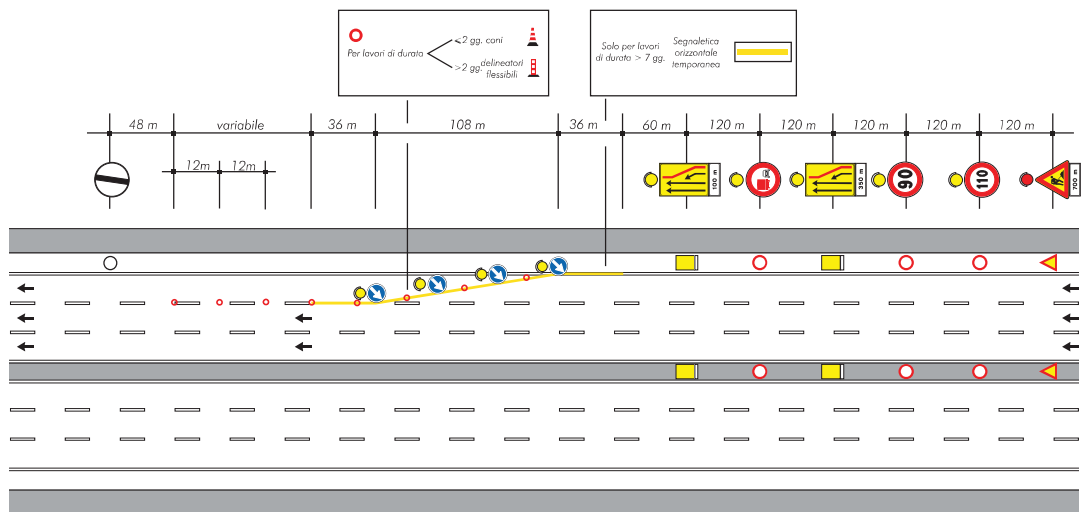
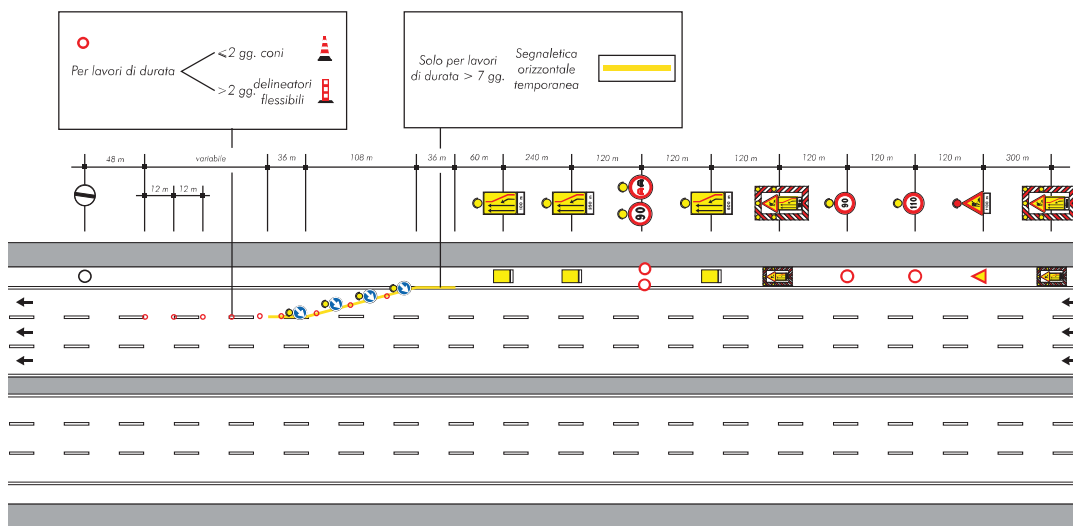


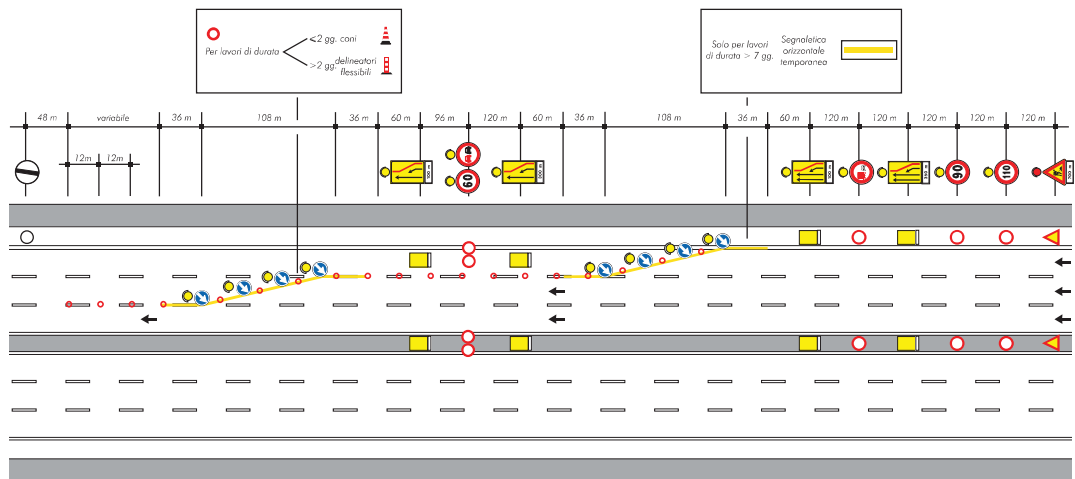
CANTIERI FISSI

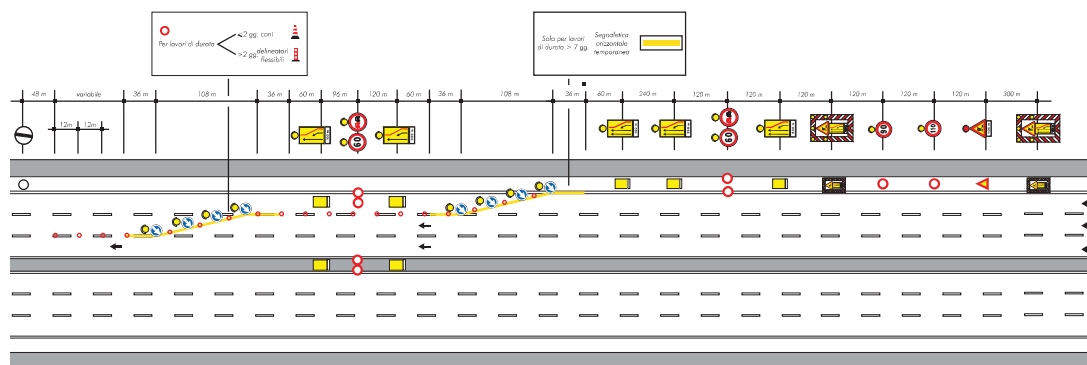
AUTOSTRADA A 3 CORSIE

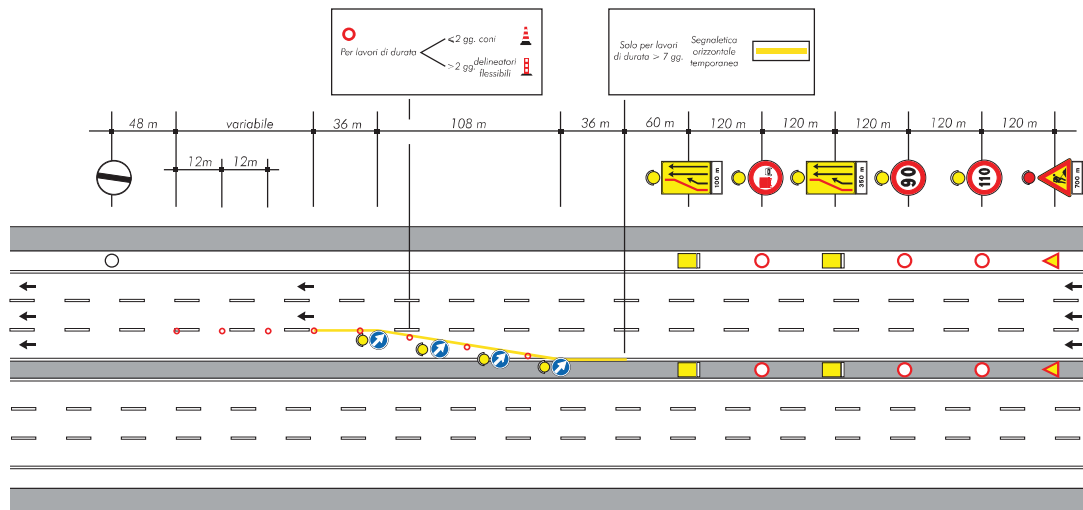


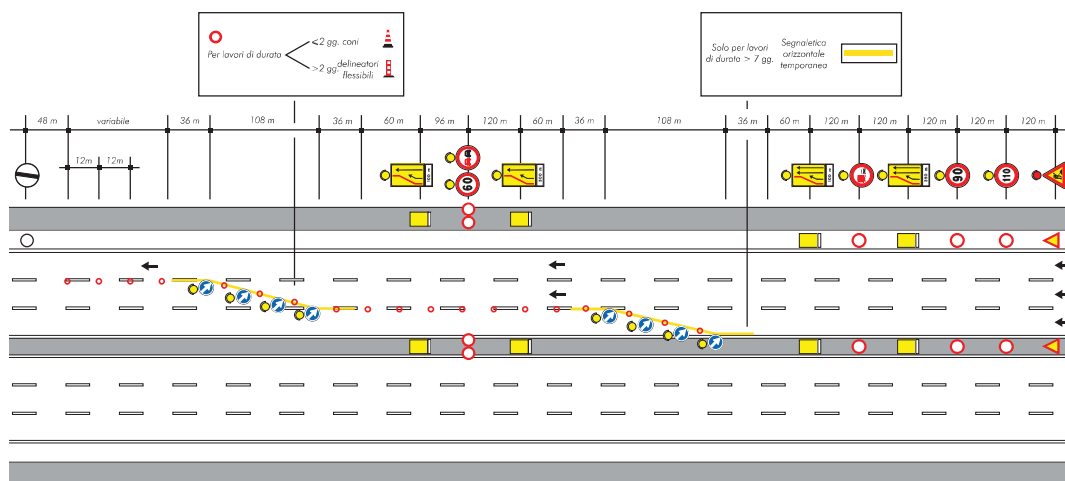


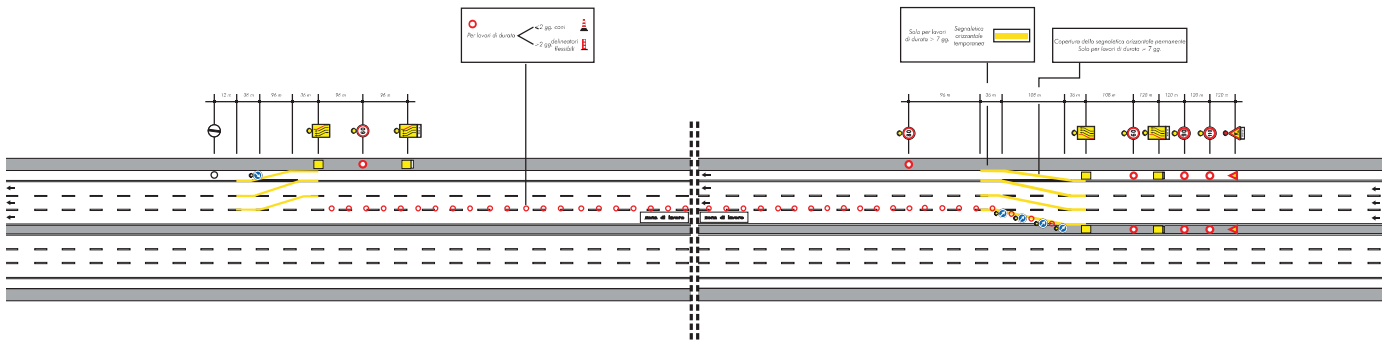




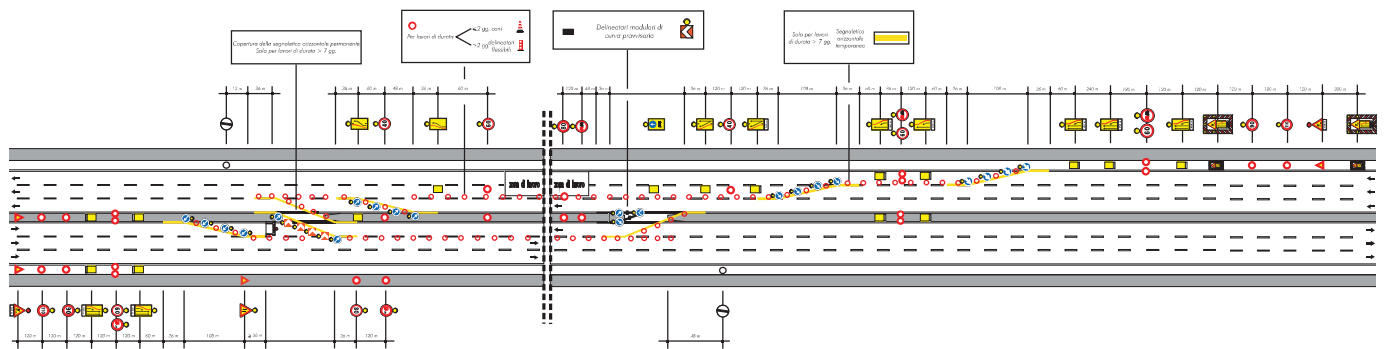




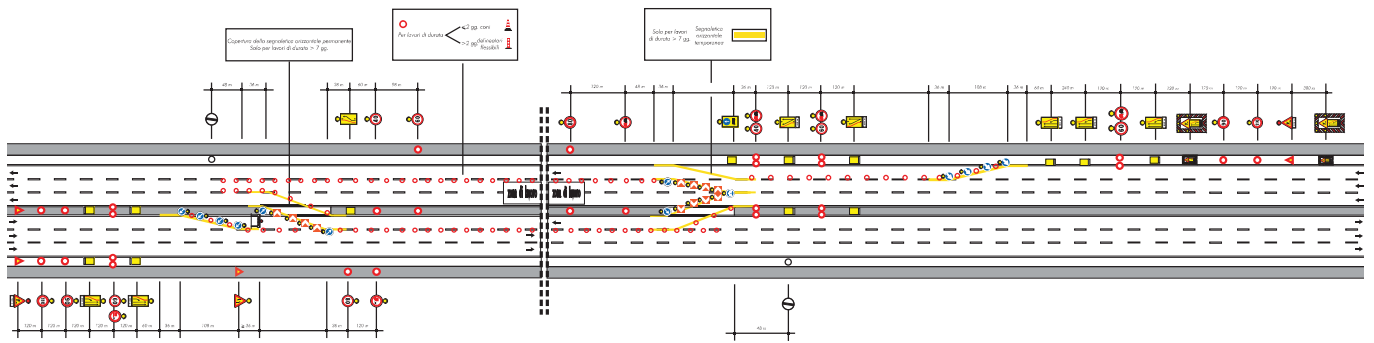


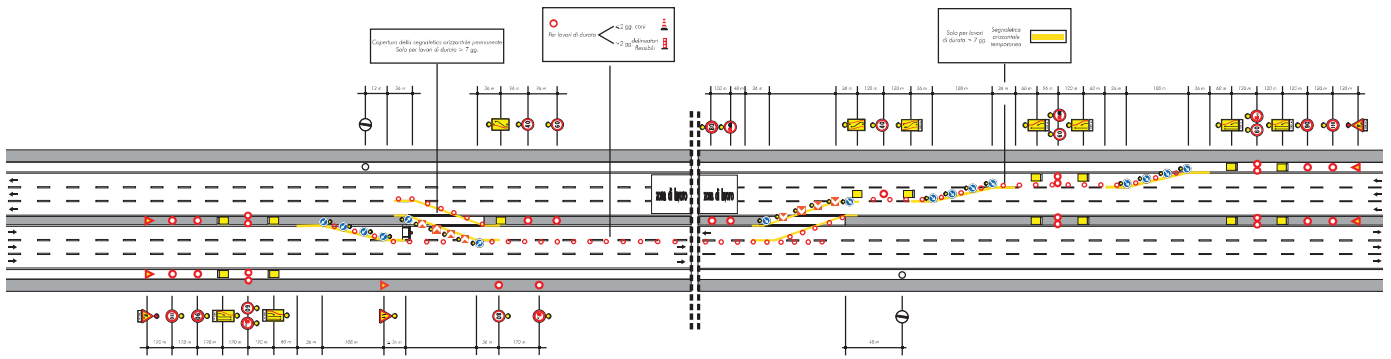


DEVIAZIONE PARZIALE CON PRERESTRINGIMENTO, CON DUE CORSIE PER LA CORRENTE DI TRAFFICO NON DEVIATA (con presegnalamento solo in destra)

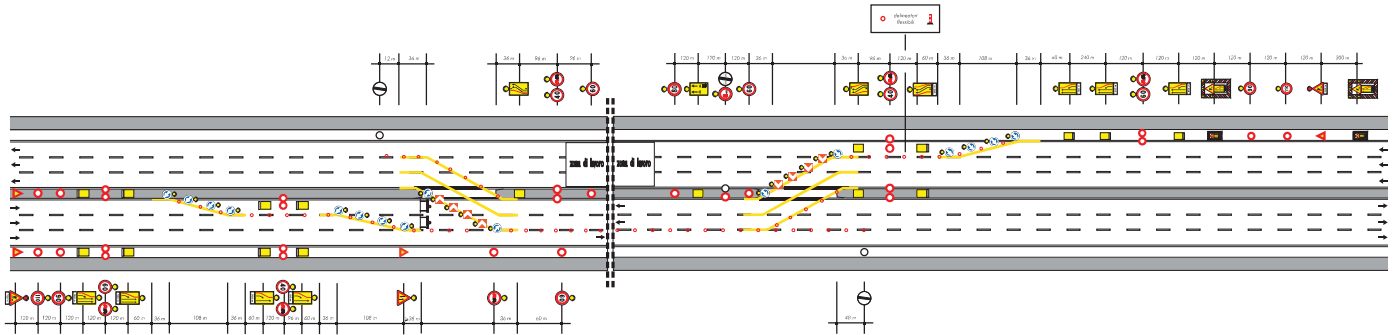


DEVIAZIONE PARZIALE, CON DUE CORSIE PER LA CORRENTE DI TRAFFICO NON DEVIATA, PRERESTRINGIMENTO IN MARCIA (con presegnalamento solo in destra)





DEVIAZIONE SU DUE CORSIE, CON UNA CORSIA PER LA CORRENTE DI TRAFFICO NON DEVIATA (PER LAVORI DI DURATA >7GG.)
(Con presegnalamento solo in destra)



DEVIAZIONE PARZIALE IN ZONA DI SVINCOLO CON PRERESTRINGIMENTO

